



plan - 2322

(210) 290-1645

“Energy Efficient, Environmentally Responsible”[®]

Approx. 2,322 sq.ft.

3 Bedrooms • 3 1/2 Baths • Open Family/Kitchen
Family Room with Patio Doors Opening to Covered Outdoor Living Space
Rear Entry 2 Car Garage



GREENHOMEBUILDERSLLC.NET

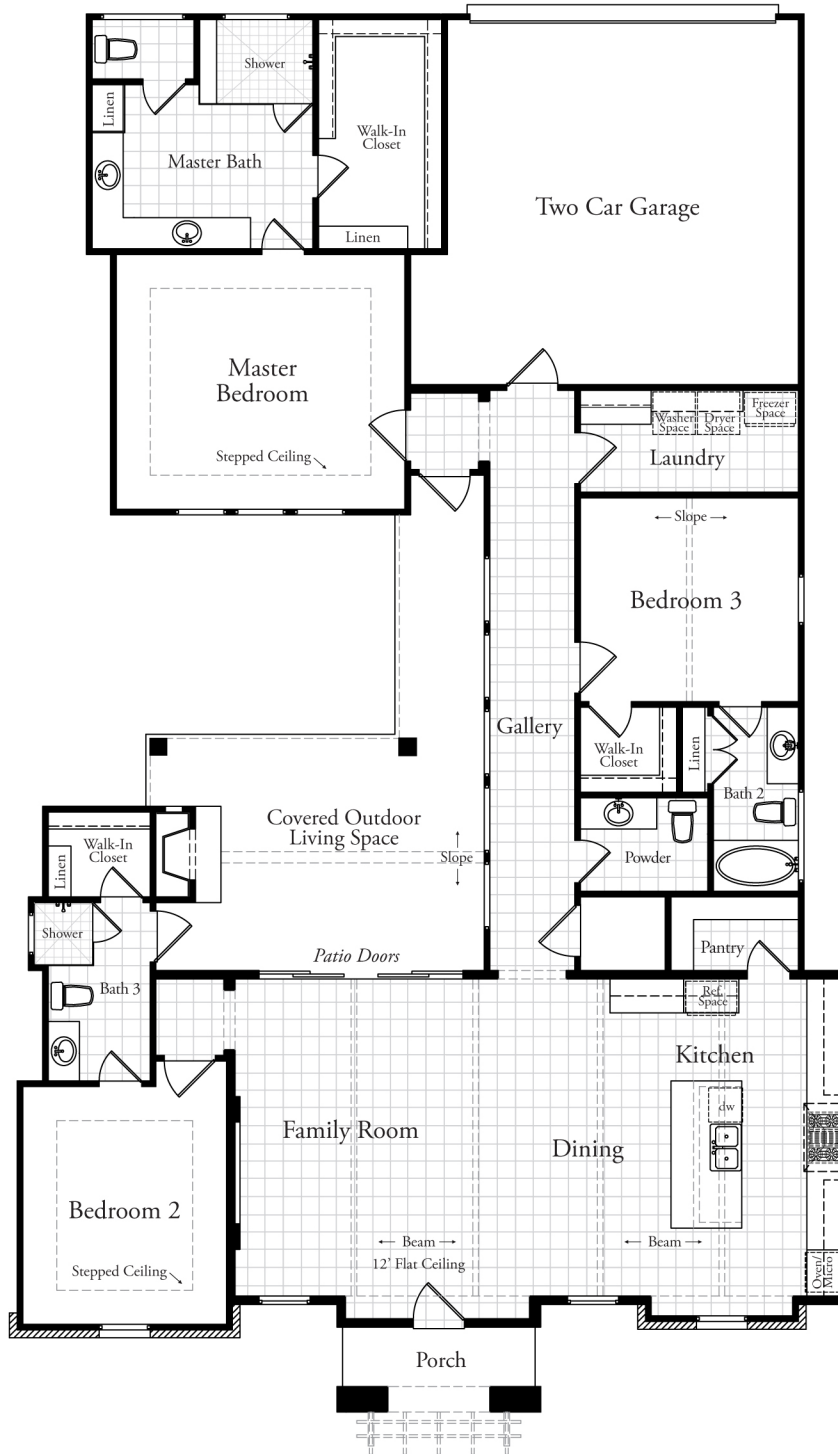


plan - 2322

(210) 290-1645

FLOORPLAN

"Energy Efficient, Environmentally Responsible"®



04-19 - Prices, terms, floor plans, specifications, home-site premiums and options are subject to change without notice or prior obligation. Floor plans, options, elevations and specifications may vary by community and home-site location. View preservation is not guaranteed. Square footages are approximate. The final purchase price will include adjustments for upgrade elevations, added options, home-site premiums, topography, utilities and/or setbacks. The location of the home on the home-site shall be determined by the builder. Not all plans will fit on every home-site. Availability is determined by the builder. Results of the home may vary depending upon occupant behavior. All homes are subject to prior sale.



CERTIFIED GREEN PROFESSIONAL™

