



plan - 4492

(210) 290-1645

“Energy Efficient, Environmentally Responsible”[®]

Approx. 2,977 sq.ft.

4 Bedrooms • Study/Dining Area • 3 1/2 Baths
Great Room with Pocket Track Doors Opening to Covered Outdoor Living Space
Outdoor Fireplace • 3 Car Side Entry Garage



GREEN

HOMEBUILDERS, LLC[®]

GREENHOMEBUILDERSLLC.NET

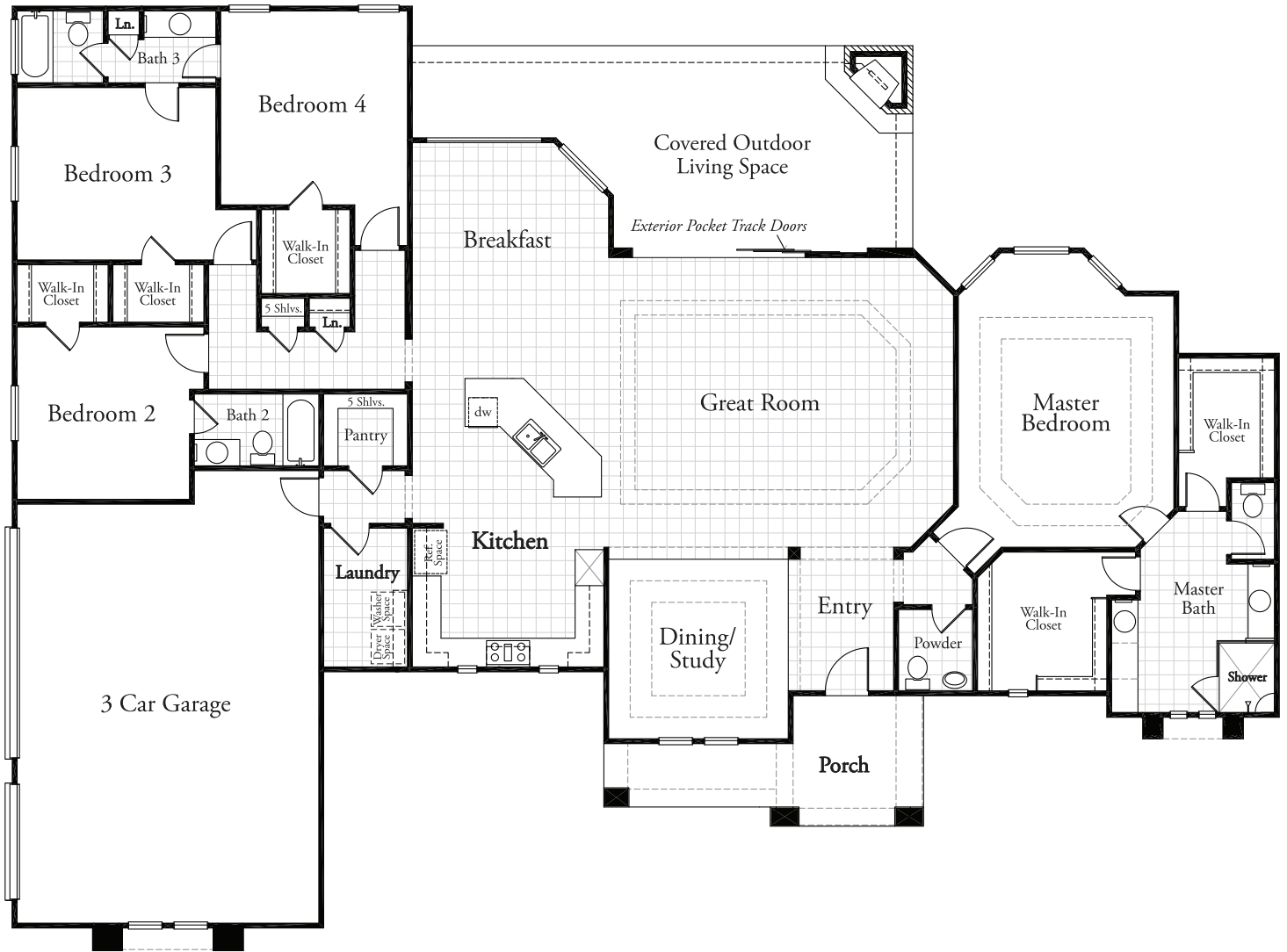


plan - 4492

(210) 290-1645

FLOORPLAN

“Energy Efficient, Environmentally Responsible”[®]



03/15 - Prices, terms, floor plans, specifications, home-site premiums and options are subject to change without notice or prior obligation. Floor plans, options, elevations and specifications may vary by community and home-site location. View preservation is not guaranteed. Square footages are approximate. The final purchase price will include adjustments for upgrade elevations, added options, home-site premiums, topography, utilities and/or setbacks. The location of the home on the home-site shall be determined by the builder. Not all plans will fit on every home-site. Availability is determined by the builder. Results of the home may vary depending upon occupant behavior. All homes are subject to prior sale.