



plan - 3252

(210) 290-1645

“Energy Efficient, Environmentally Responsible”[®]

Approx. 3252sq.ft.

4 Bedrooms • Game Room • 2 1/2 Baths • Grand Foyer • Open Family Room
Formal Dining Area • Covered Patio with Fireplace • 8' x 12' Patio Door • 2 Car Garage



GREEN
HOMEBUILDERS, LLC

GREENHOMEBUILDERSLLC.NET

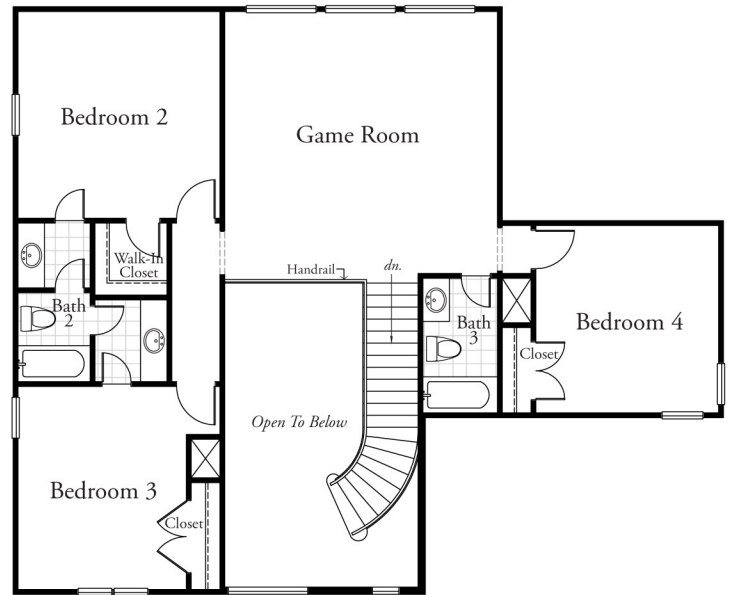
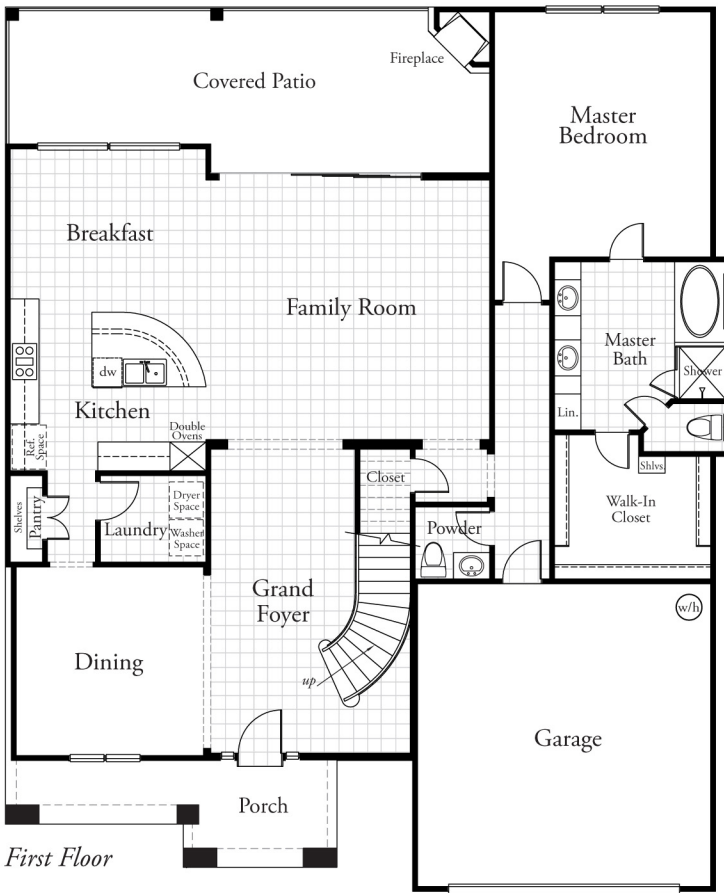


plan - 3252

(210) 290-1645

FLOORPLAN

“Energy Efficient, Environmentally Responsible”®



10/12 - Prices, terms, floor plans, specifications, home-site premiums and options are subject to change without notice or prior obligation. Floor plans, options, elevations and specifications may vary by community and home-site location. View preservation is not guaranteed. Square footages are approximate. The final purchase price will include adjustments for upgrade elevations, added options, home-site premiums, topography, utilities and/or setbacks. The location of the home on the home-site shall be determined by the builder. Not all plans will fit on every home-site. Availability is determined by the builder. Results of the home may vary depending upon occupant behavior. All homes are subject to prior sale.