



plan - 3331

(210) 290-1645

“Energy Efficient, Environmentally Responsible”<sup>®</sup>

Approx. 3,331 sq.ft.

4 Bedrooms • Study • Game Room • 3 1/2 Baths  
Great Room with Exterior Pocket Doors Opening to Covered Outdoor Living Space  
Outdoor Fireplace • 3 Car Side Entry Garage



[GREENHOMEBUILDERSLLC.NET](http://GREENHOMEBUILDERSLLC.NET)

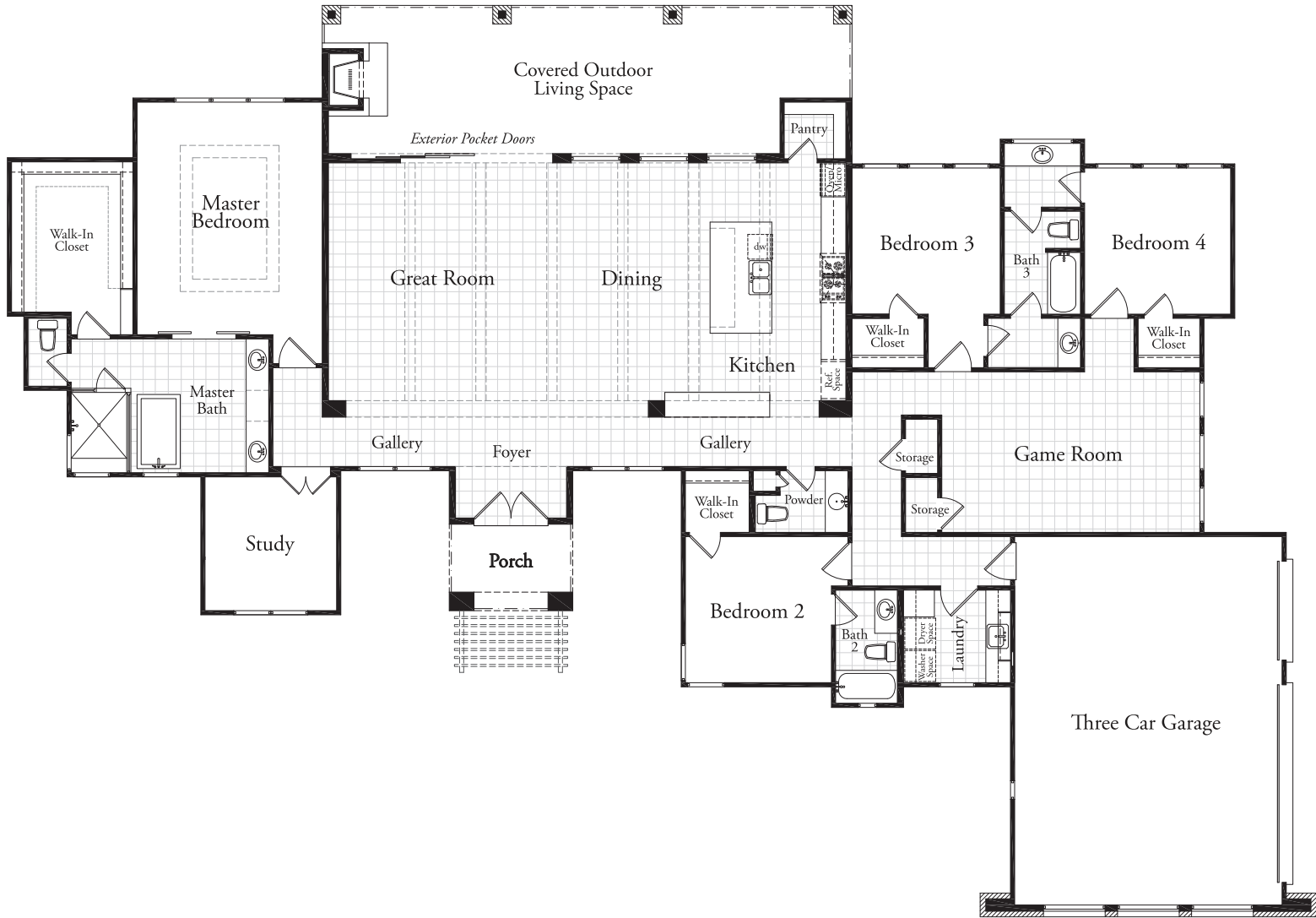


plan - 3331

(210) 290-1645

# FLOORPLAN

"Energy Efficient, Environmentally Responsible"®



08/16 - Prices, terms, floor plans, specifications, home-site premiums and options are subject to change without notice or prior obligation. Floor plans, options, elevations and specifications may vary by community and home-site location. View preservation is not guaranteed. Square footages are approximate. The final purchase price will include adjustments for upgrade elevations, added options, home-site premiums, topography, utilities and/or setbacks. The location of the home on the home-site shall be determined by the builder. Not all plans will fit on every home-site. Availability is determined by the builder. Results of the home may vary depending upon occupant behavior. All homes are subject to prior sale.